

# FEMA GEOSPATIAL COORDINATION

Conference Bridge: 800-320-4330, Passcode: 132811#

Adobe Connect: <https://fema.connectsolutions.com/geospatialcoordinationcall/>

*Tropical Storm Lane*

*Saturday, August 25, 2018*



FEMA

# Situation Overview

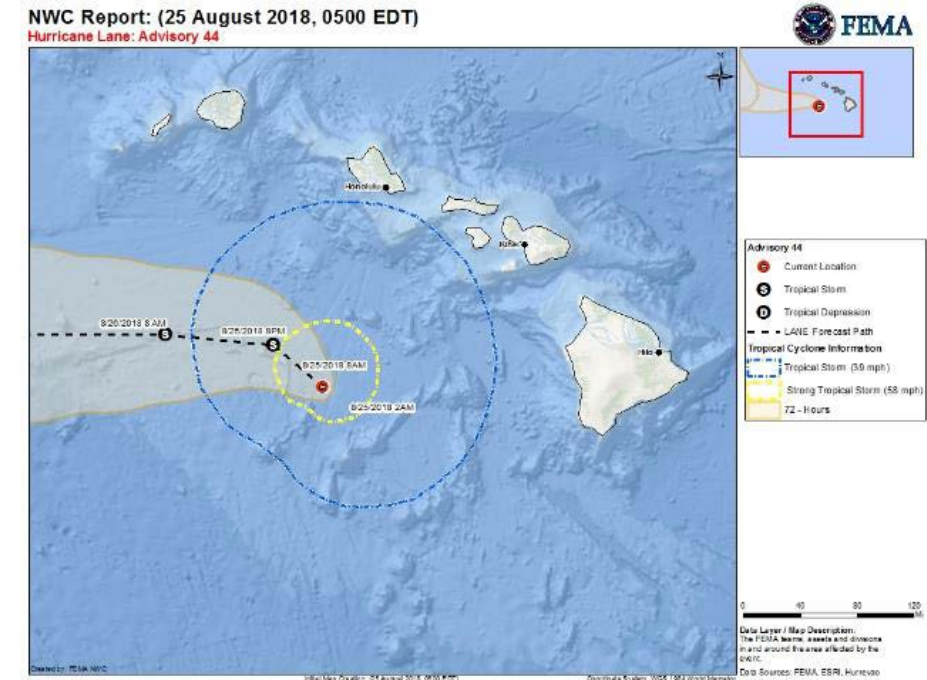
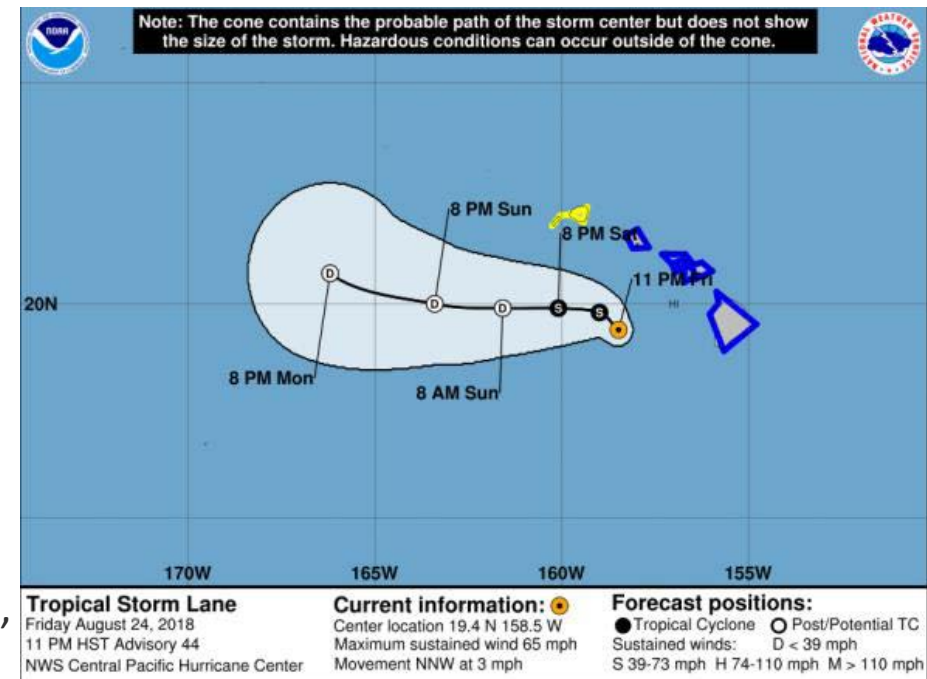
## Tropical Storm Lane (Advisory #44 as of 5:00 a.m. EDT)

- Located 135 miles SSW of Honolulu, Hawaii
- On the forecast track, center of Lane will pass south of Kauai and Niihau today
- Moving NNW at 3 mph
- Maximum sustained winds 65 mph
- Weakening is forecast through the weekend; may become a remnant low late tonight or Sunday
- Tropical-storm-force winds extend out 130 miles
- Tropical Storm Warning in effect for Oahu, Maui County (including islands of Maui, Lanai, Molokai and Kahoolawe) and Hawaii County
- Tropical Storm Watch in effect for Kauai County, including islands of Kauai and Niihau

## Hazards Affecting Land

- Outer rain bands will produce excessive rainfall this weekend which could lead to additional flash flooding and landslides
- Expected to produce total rain accumulations of 10 to 20 inches in some areas
- Localized storm total amounts in excess of 40 inches have already been observed along the windward side of the Big Island
- Large swells will impact the Hawaiian Islands into the weekend; will produce high surf along exposed south and east shorelines through today
- Isolated tornadoes possible today across parts of the Big Island, Maui County and Oahu

*(Information from 08-25-2018 FEMA Daily Operations Briefing)*



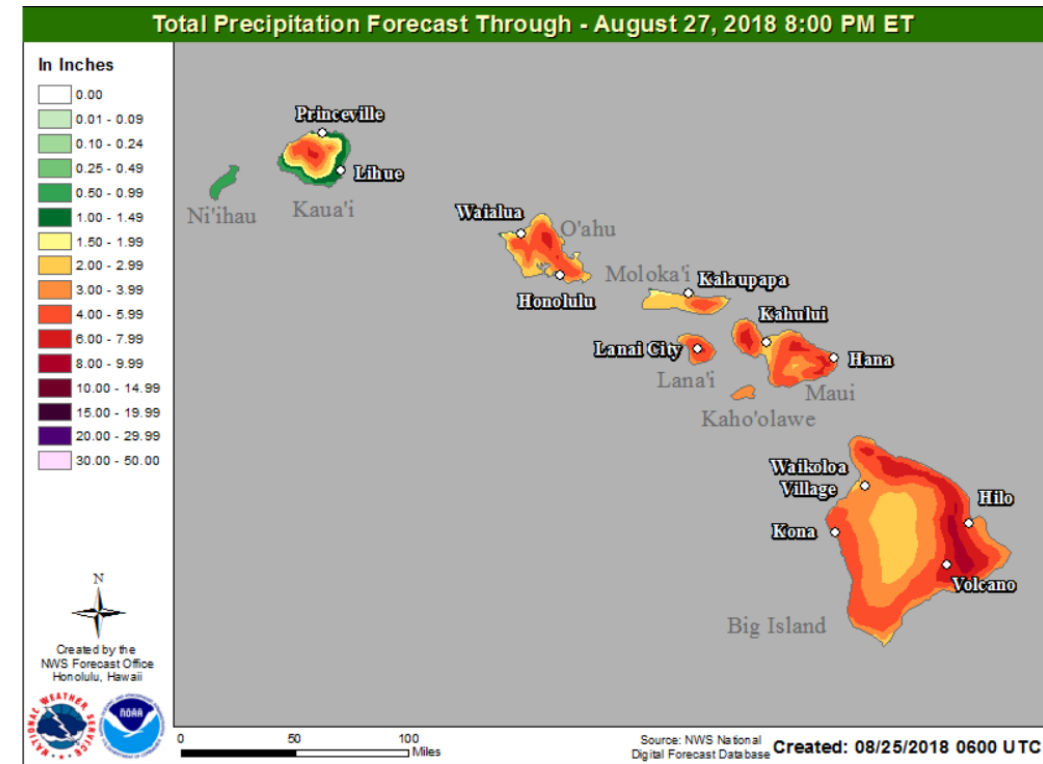
# Situation Overview

## Impacts

- Over two feet of rain has already fallen on the windward side of the Big Island
- Road closures, swift water rescues, and flooded homes have been reported
- Minimal customers without power *\*Note: Customer outage data is provided by the Department of Energy's EAGLE-I system. Comprehensive National coverage of all electrical service providers is not available.*
- All airports open with multiple flight cancellations and delays
- Honolulu Transit & Maui Public Transit system suspended services

## Response (State / Local)

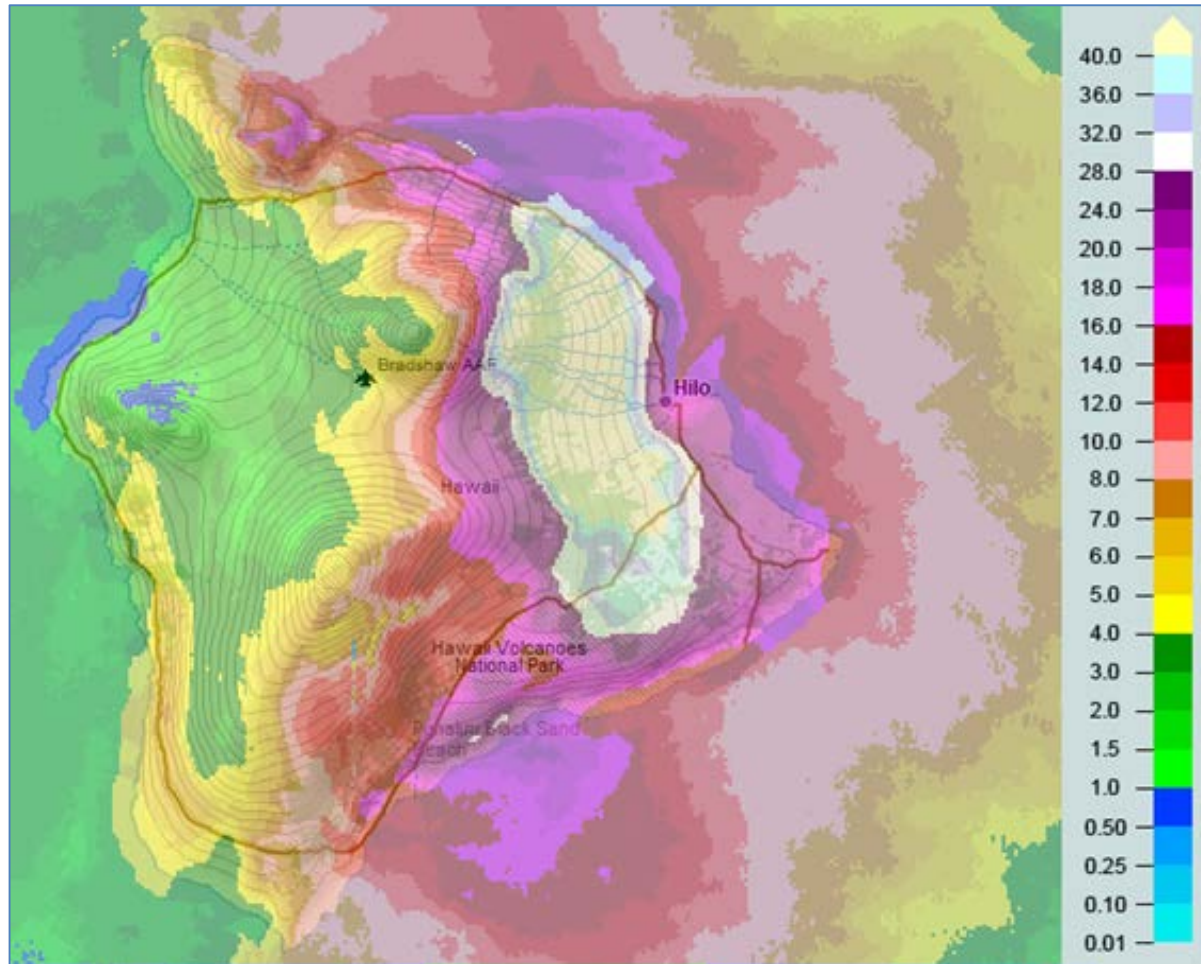
- HI EOC is at Partial Activation (Kilauea lava flow and Tropical Storm Lane)
- Governor declared a State of Emergency on August 21, 2018
- County EOC Activations:
  - Hawaii & Maui Counties – Full Activation
  - City and County of Honolulu (Oahu) – Full Activation
  - Kauai County – Partial Activation



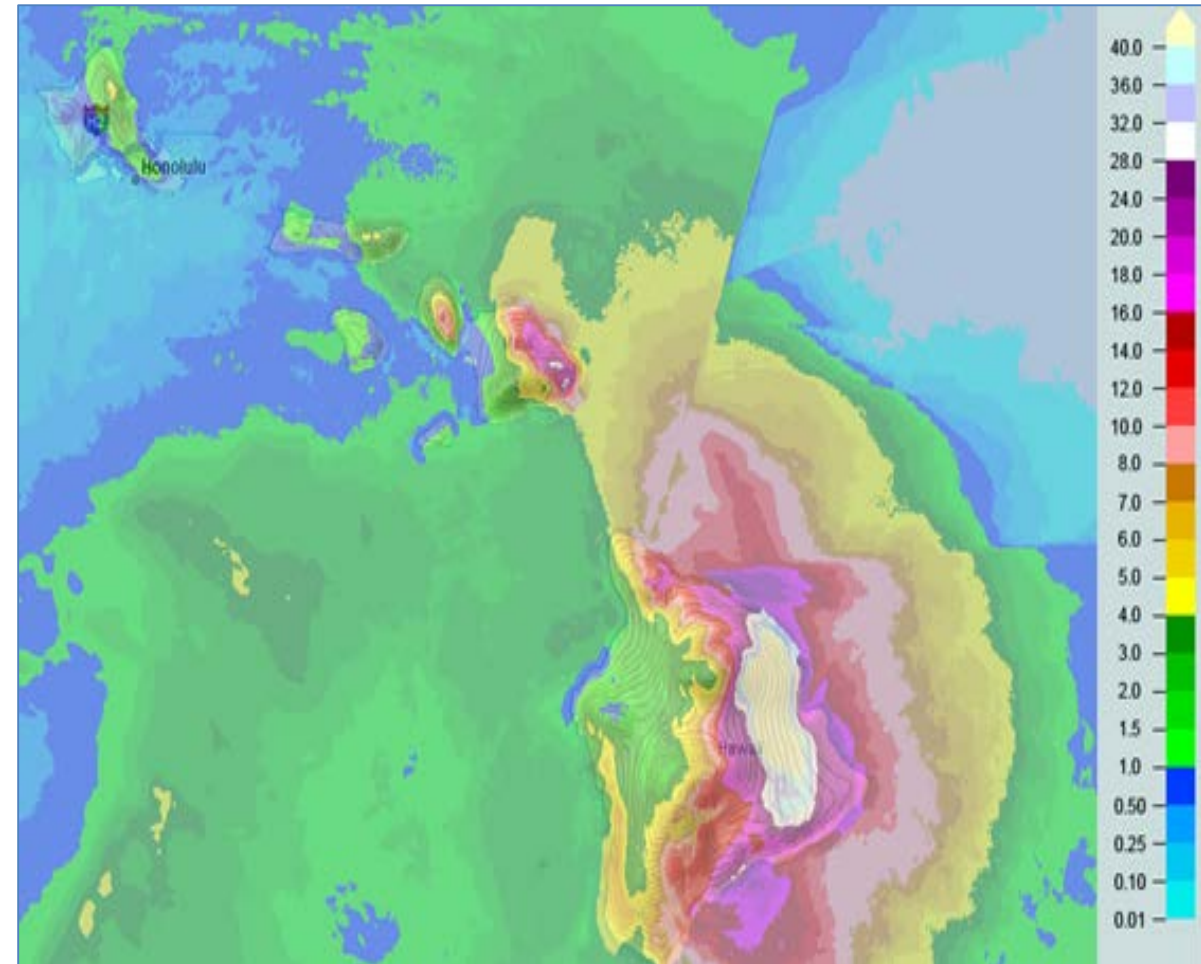
(Information from 08-25-2018 FEMA Daily Operations Briefing)



# Situation Overview - 3 Day Accumulated Rain (experimental graphics)



Waiakea Uka, HI: 45.8 inches  
Hilo, HI: 35.2 inches



West Wailuaiki, Maui: 18.16 inches

# FEMA Region IX Update

- **Activations/Declarations:**
  - EM Declaration (EM-3399-HI)
  - ESFs 1, 2, 3, 8, 9, 12, 13 deployed to Hawaii
  - RIX RRCC partially activated at Enhanced Watch
  - RIX IMAT Team 1 remains in Hawaii
  - RVII IMAT is in RIX RRCC supporting response ops
  - LNOs are deployed to all county EOCs
  - 2-3 GIS Specialists to be deployed to Oahu to support GIUL
- **Current Priorities:**
  - Most concerned about flooding and landslides in Hilo and on the big island
  - Road outage to medical facility on the big island but teams are heading there now
  - Still keeping eyes on the Lahaina fires – the northern fire is 100% contained, the southern fire is 40% contained
    - Approximately 100 homes evacuated
- **Products:**
  - **Flooding assessment**
  - **Map Journal** - <http://arcg.is/WGXDq>
    - Open Shelters Dashboard
    - Hazard Exposure
    - CIKR
    - Transportation & Traffic
    - Power Outage Map

# FEMA HQ Update

- **Community Lifelines**
  - Working to implement these themes/lifelines into future Geospatial Coordination Calls
  - How is the Federal Geospatial Community supporting these lifelines with the products being created and delivered?
    - Safety and Security
    - Food, Water, Sheltering
    - Health and Medical
    - Energy (Power & Fuel)
    - Communications
    - Transportation
    - Hazardous Waste

## HURRICANE LANE RESPONSE

### Hawaii

As FEMA and federal partners continue to support state and local governments, as residents should continue following the direction of local officials and not let their guard down. Tropical Storm Lane continues to weaken, but rain continue along some of the islands.



#### SAFETY AND SECURITY

Three FEMA Urban Search and Rescue teams and four Law Enforcement Quick Response Teams are deployed in Hawaii to support potential lifesaving operations.



#### FOOD, WATER, SHELTERING

FEMA maintains strategically located facilities on the islands to provide the state with supplies as needed and requested. Approximately 1,100 people stayed in emergency centers Friday night as the numbers continue to decrease.



#### HEALTH AND MEDICAL

Dialysis Centers with on-site generators have been identified on each island. Two U.S. Department of Health and Human Services Disaster Medical Assistance teams are deployed to Hawaii.



#### ENERGY (POWER & FUEL)

Generators have been shipped and ready to use. U.S. Department of Energy and U.S. Army Corps of Engineers are deployed to support temporary power and energy systems.



#### COMMUNICATIONS

Mobile Emergency Communications Assets are deployed to support the state. FEMA staff are pre-positioned to ensure operational communications are resilient for effective coordination at all five county operation centers.



#### TRANSPORTATION

Sea ports are beginning to reopen as assessments continue. All major airports are open at this time, and airlines are beginning to schedule flights.



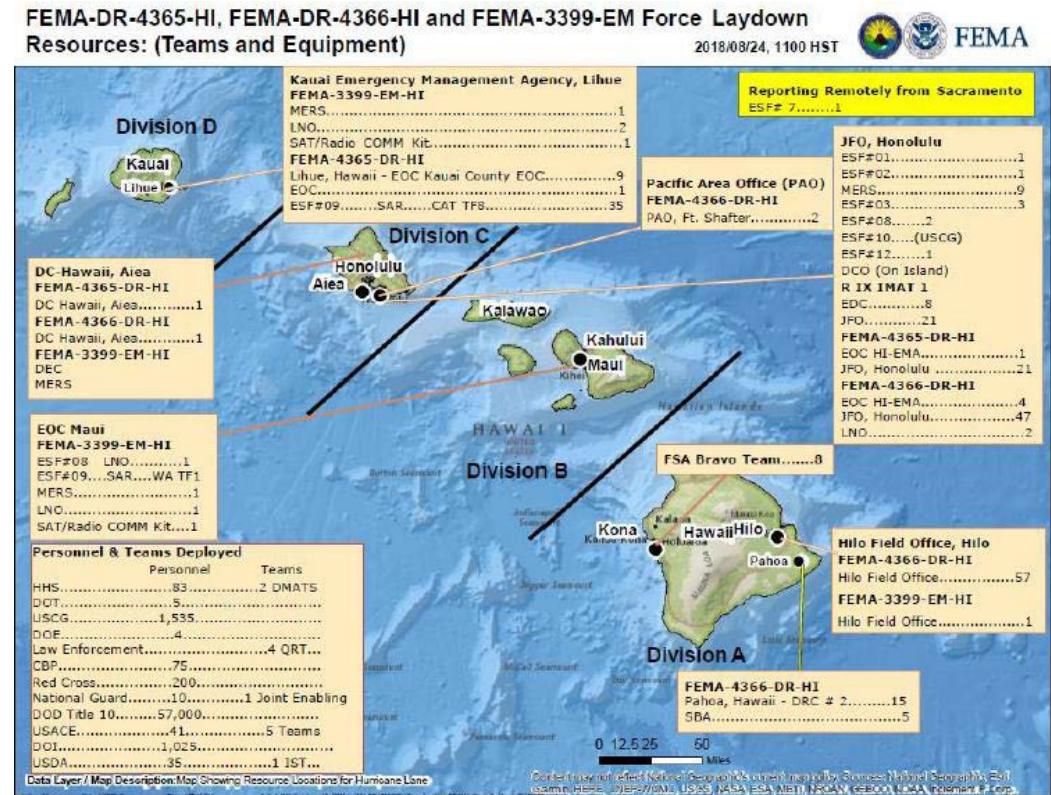
#### HAZARDOUS WASTE

The U.S. Army Corps of Engineers is deployed to support planning for debris or waste removal.



# FEMA HQ NRCC Updates

- FEMA NWC at Steady State, continues to monitor
- NRCC at Level I, Full Activation (24/7)
- Bothell MERS deployed to Honolulu, Hilo, Wailuku and Lihue; Denver MERS deployed to Honolulu
- Incident Support Bases (ISBs) established in Maui, Kona, and Kauai
- Reservist from HLT supporting / monitoring in HI



(Information from 08-25-2018 FEMA Daily Operations Briefing)

# FEMA HQ NRCC Updates

- **Production and Modeling:**

- **Disasters.Geoplatform** page for Hurricane Lane is up:

<https://communities.geoplatform.gov/disasters/category/national-disaster-events/hurricane-lane/>

- **Built Up Areas** from Oak Ridge National Labs are available for download and as a web service for the Hawaiian Islands. Due to the expedited nature of this delivery, the dataset has limited attribution/metadata and is not as clean/validated as the Building Outlines datasets typically are.

- **Web Service:**

<https://services.arcgis.com/XG15cJAIne2vxtgt/arcgis/rest/services/BuiltUpAreas/FeatureServer>

- **Download:**

[https://data.femadata.com/NationalDisasters/HurricaneLane/Data/BuiltUpAreas\\_OakRidgeNationalLab/HawaiianIslands/](https://data.femadata.com/NationalDisasters/HurricaneLane/Data/BuiltUpAreas_OakRidgeNationalLab/HawaiianIslands/)





# FEMA HQ NRCC – Remote Sensing

- **Collection and Analysis Priorities: No change**
  - Flooded communities, impacted CIKR, transportation impacts, landslides affecting communities and transportation routes
- **Satellite Collections:**
  - Commercial/Civil SAR collection continues (RadarSAT II, TSX, Sentinel-1, ALOS-2)
  - Initial COMSAR exploitation not showing significant flooding or standing water
  - High resolution platforms (DG, Pleiades-1A/1B) tasked
  - FEMA to cancel support request for Copernicus EMS
- **Aerial Collections:**
  - Approved Mission Assignments:
    - CAP: Awaiting favorable weather conditions
  - Pending Mission Assignments:
    - DoD: Pending at PACOM
    - CBP: Processing at NRCC
    - Awaiting confirmation from field on imaging requirements
  - NRCC developing initial aerial/ground imagery collection plan

# FEMA Crowdsourcing

## ◆ Crowdsourcing Activation:

- NRCC desk is staffed for day shift
- Daily Crowdsourcing Coordination Call

## ◆ Crowdsourcing Playbook:

- Testing our new [Crowdsourcing Playbook](#)

## ◆ Data Collection:

- Critical Lifelines will inform crowdsourcing requests

## ◆ Crowdsourcing Requests: Situational Awareness and emergent trends/behavior of the following:

- Gas
- Road Status
- Power

Crowdsourcing Coordination Call held daily at **5:00 PM EST in 2NE-2910**

Email: [FEMA-crowdsourcing@fema.dhs.gov](mailto:FEMA-crowdsourcing@fema.dhs.gov)

Webinar: <https://zoom.us/j/2228882929>

Call In Number: +16699006833, 2228882929#

# Agency Updates

- **PDC**
  - Hurricane Lane” event in DisasterAWARE™:  
[https://emops.pdc.org/emops/?hazard\\_id=84352](https://emops.pdc.org/emops/?hazard_id=84352)
- **US&R\***
  - Federal Search and Rescue Coordination Group deployed to Honolulu
  - Incident Support Team (IST) White deployed to Honolulu
  - Three NIMS Type 3 US&R Task Forces deployed to Hawaii: CA-TF8 (Kauai), CA-TF3 (Oahu), and WA-TF1 (Maui)
  - Six US&R Mission Ready Packages –Water Operations are on Alert
- **USACE\***
  - Staff (54 personnel) on Oahu and Kauai including two USACE Power Planning and Response Teams (PRT); two 249th Prime Power Teams; and a Debris PRT
- **USGS**
  - Focused on landslide concerns. Areas of greatest concern at this time are steep slopes and canyons and gulches draining higher mountains on the Big Island, western Maui, and Oahu. Providing GIS data for preliminary landslide hazard assessments.
  - Hurricane Lane (Public - GeoPlatform) – ESM
    - <https://arcg.is/XCiTK> (Best viewed in Google Chrome)

*\*(Information from 08-25-2018 FEMA Daily Operations Briefing)*

# Agency Updates

- **USACE\***
  - Staff (54 personnel) on Oahu and Kauai including two USACE Power Planning and Response Teams (PRT); two 249th Prime Power Teams; and a Debris PRT
- **USGS**
  - Focused on landslide concerns. Areas of greatest concern at this time are steep slopes and canyons and gulches draining higher mountains on the Big Island, western Maui, and Oahu. Providing GIS data for preliminary landslide hazard assessments.
  - Hurricane Lane (Public - GeoPlatform) – ESM
    - <https://arcg.is/XCiTK> (Best viewed in Google Chrome)
- **Red Cross**
  - Weather permitting, teams ready to collect damage assessments using Survey123
  - Currently experiencing technical difficulties with attaching photos to assessments, working with ESRI to resolve issue

*\*(Information from 08-25-2018 FEMA Daily Operations Briefing)*



# Agency Updates

- **DHS**
  - No Update
- **NGA**
  - No Update
- **USCG**
  - No Update
- **HHS**
  - No Update
- **International Partners**
  - No Update

# Non-Federal Partner Updates

- **ESRI**

- Hurricane Lane ArcGIS Online Group

- <http://arcg.is/1G4GOX>

- WAZE Data Feed

- Feature Service:

- [https://services.arcgis.com/DO4gTjwJVlJ7O9Ca/arcgis/rest/services/Waze\\_Alerts\\_Hurricane\\_Lane/FeatureServer](https://services.arcgis.com/DO4gTjwJVlJ7O9Ca/arcgis/rest/services/Waze_Alerts_Hurricane_Lane/FeatureServer)

- Item page:

- <http://disasterresponse.maps.arcgis.com/home/item.html?id=f1a2d79142d94cf0b66851e420a3b72c#overview>

# Additional Details

# Coordination Calls

- *FEMA Geospatial Coordination Call – Daily @ 2:00 PM (Eastern)*  
**Conference Bridge: 800-320-4330, Passcode: 132811#**  
**Adobe Connect: <https://fema.connectsolutions.com/geospatialcoordinationcall/>**
- *Slides will be posted at the following locations:*
  - <https://data.femadata.com/NationalDisasters/HurricaneLane/Documents/GeospatialCoordinationCallNotes/>
  - <https://communities.geoplatform.gov/disasters/interagency-geospatial-coordination-call-notes/>
- *To be added to the distribution list/calendar invite, please send an email with your name and contact information to:*  
**POC: [FEMA-MDWG@fema.dhs.gov](mailto:FEMA-MDWG@fema.dhs.gov)**



# Acronyms & Definitions

<b>AGOL</b>	ArcGIS Online
<b>AOI</b>	Area of Interest
<b>ASI</b>	Agenzia Spaziale Italiana (Italian Space Agency)
<b>CAP</b>	Civil Air Patrol
<b>CI/KR</b>	Critical Infrastructure and Key Resources
<b>Dec Map</b>	Declaration map, used for both types of declarations provided for in the Stafford Act (emergency declarations and major disaster declarations)
<b>DEMs</b>	Digital Elevation Models
<b>EOC</b>	Emergency Operations Center
<b>GeoFramework</b>	FEMA's 21 standard GIS products for response and recovery efforts, including hazard maps, impacted population, transportation, etc.
<b>GeoPlatform</b>	FEMA's ArcGIS Online
<b>HDDS</b>	USGS Hazards Data Distribution System
<b>HIFLD</b>	Homeland Infrastructure Foundation-Level Data
<b>HWM</b>	High Water Mark
<b>MA</b>	Mission Assignment
<b>MAC</b>	FEMA Mapping and Analysis Center
<b>MEOWs</b>	Maximum Envelope of Water; provides worst case basin snapshot for a particular storm category, forward speed, trajectory, and initial tide level
<b>MDWG</b>	FEMA Modeling and Data Working Group
<b>NFHL</b>	National Flood Hazard Layer
<b>NFIP</b>	National Flood Insurance Program
<b>NGA</b>	National Geospatial-Intelligence Agency
<b>NRCC</b>	National Response Coordination Center; Coordinates the overall Federal response and support
<b>NWC</b>	FEMA National Watch Center
<b>NWS</b>	National Weather Service
<b>PDA</b>	Preliminary Damage Assessment
<b>Reploss</b>	Repetitive Loss, as related to NFIP-insured structures
<b>RRCC</b>	FEMA Regional Response Coordination Center
<b>RWC</b>	Regional Watch Center
<b>SAS</b>	Situational Awareness Section, as related to the NRCC and/or RRCC
<b>UAS</b>	Unmanned Aircraft Systems
<b>WebEOC</b>	FEMA internal incident management software/system for information sharing, storage, requests, etc.